



## Boltek EFM-INV-M / EFM-INV2 / EFM-INV3 Inverting Mounting Kit

### *Installation Instructions*



#### **Introduction**

The EFM-INV-M, EFM-INV2, and EFM-INV3 Inverted Mounting Kits will allow you to mount your EFM-100 or EFM-200 Electric Field Mill in the inverted downward-facing configuration. Inverting your field mill will provide you with reduced precipitation noise.

**ELECTROCUTION WARNING:**  
**INSTALLATION THIS PRODUCT NEAR POWERLINES IS DANGEROUS.**  
**FOR YOUR SAFETY, FOLLOW THE INSTALLATION DIRECTIONS.**

**SEE ADDITIONAL WARNINGS ON REVERSE**

**ELECTROCUTION WARNING:**  
**INSTALLATION OF THIS PRODUCT NEAR POWERLINES IS DANGEROUS.**  
**FOR YOUR SAFETY, FOLLOW THE INSTALLATION DIRECTIONS.**

**FALL WARNING:**  
**DO NOT ATTEMPT INSTALLATION AT HEIGHTS UNLESS YOU ARE EXPERIENCED**  
**IN THE SAFE USE OF LADDERS AND FALL ARRESTING EQUIPMENT. IF UNSURE**  
**REFER INSTALLATION TO AN EXPERIENCED ANTENNA OR SATELLITE INSTALLER.**

**LIGHTNING ACTIVITY WARNING:**  
**DO NOT WORK ON THE SYSTEM OR CONNECT OR DISCONNECT CABLES DURING**  
**PERIODS OF LIGHTNING ACTIVITY.**

## Installation and Grounding Warning



**Warning** Do not locate the sensor near overhead power lines or other electric light or power circuits, or where it can come into contact with such circuits. When installing the sensor, take extreme care not to come into contact with such circuits, as they may cause serious injury or death. For proper installation and grounding of the sensor, please refer to national and local codes (e.g. U.S.:NFPA 70, National Electrical Code, Article 810, in Canada: Canadian Electrical Code, Section 54).

### Document Revision History

1.0	2009	Original document
1.1	07/31/2011	Added instructions to apply silicone grease to threads and washer

## Contents of the Kit

Your EFM-INV-M (Pole mount bracket), EFM-INV2 (2 foot tripod) or EFM-INV3 (3 foot tripod) kit should include the following items:



Inverting Mast



Inverted Cover



Shroud



Junction Box



Junction Box Cover



Silicone Grease



Pole mount bracket (EFM-INV-M)  
with clamps & bolts

or



2' Tripod (EFM-INV2)

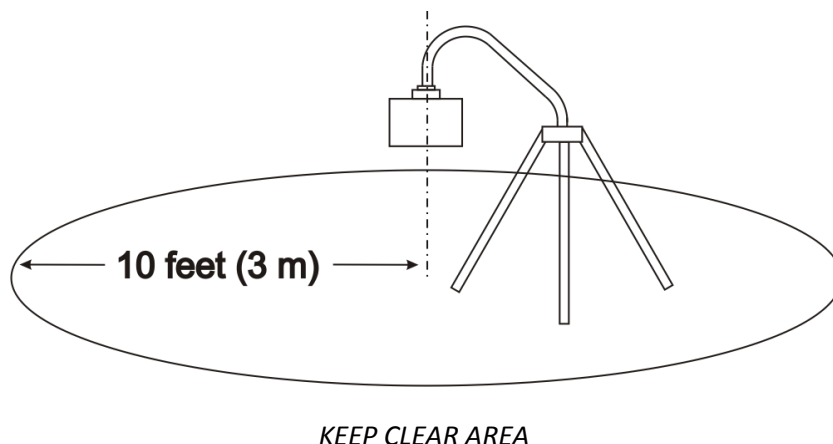
or



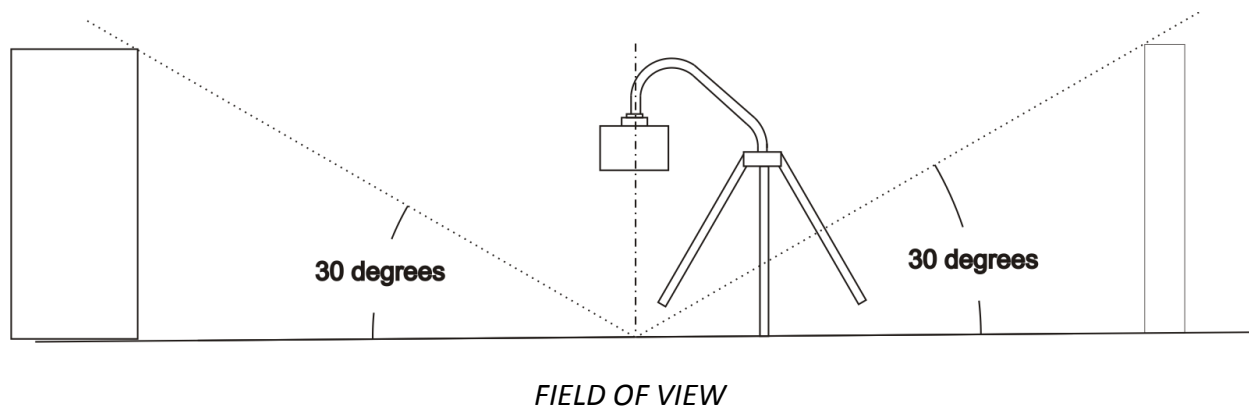
3' Tripod (EFM-INV3)

## Choosing a Mounting Location

Choosing a suitable mounting location is the single most important aspect of a successful installation.



Persons or animals entering the Keep Clear Area may be detected by the field mill as a High Electric Field or Lightning. If the field mill is mounted at ground level a fence or other barrier should be erected around the field mill. Keep the area directly under the field mill clear of long grass or weeds. Patio slabs or a poured concrete pad is recommended for ground installations.



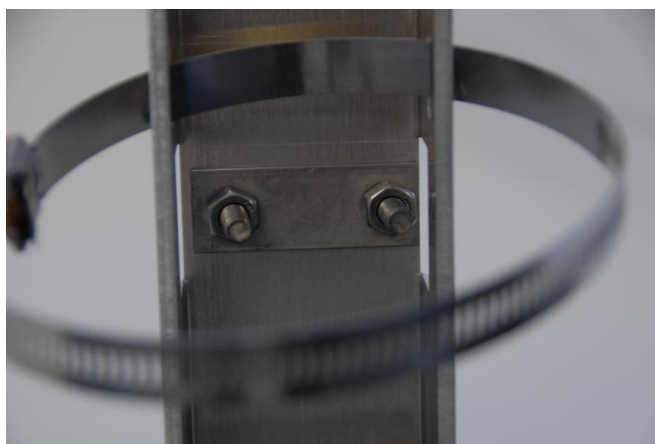
The electric field mill requires a view of the sky to detect the static charge on overhead clouds. Obstructions within the field mill's field of view may reduce the sensitivity of the field mill.

Secure the tripod to the roof or patio slabs/concrete pad on the ground. For a no-holes tripod installation on a flat roof the tripod may be secured to patio slabs placed on the roof. Run cables away from the field mill sensor, not directly underneath.

**Assembling the pole mount bracket**

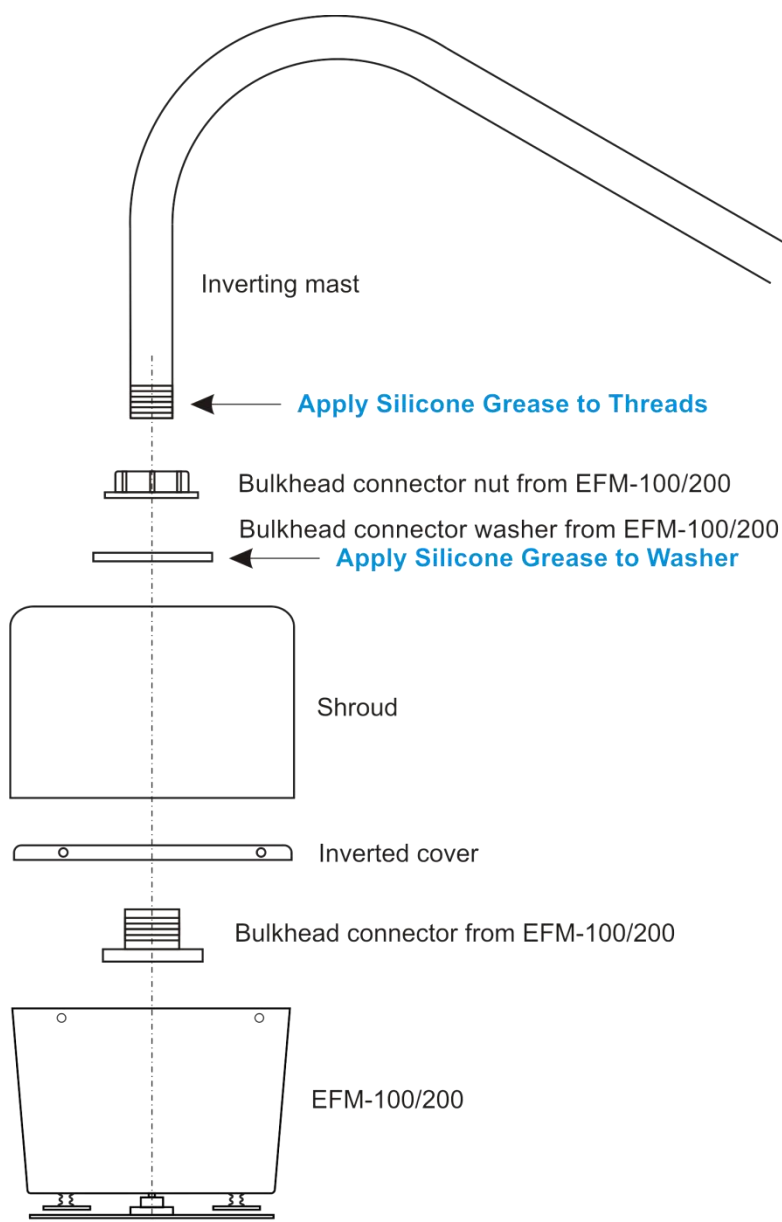
(Skip this page if using INV2 or INV3 kit)

Remove nuts and washers from the two U-Bolts and place around inverted mast. Secure bolts to bracket as shown below



Open hose clamps, and hold bracket against pole. Place hose clamps through bracket and tighten around pole. Recommended pole size is between 2.5" and 4" outer diameter. If a larger pole is used, bigger hose clamps can be purchased at a local hardware store.

## Assembling the hardware



### EXPLODED VIEW OF ASSEMBLY

**COAT THREADS AND RUBBER WASHER WITH SILICONE GREASE.**

**RUBBER WASHER MUST BE LOCATED BETWEEN NUT AND SHROUD.**

**FAILURE TO PROPERLY INSTALL WASHER WILL RESULT IN WATER DAMAGE TO FIELD MILL  
NOT COVERED BY WARRANTY**



*PIPE WRENCH TIGHTENING BULKHEAD ONTO MAST (HAND TIGHT +4 TURNS WITH WRENCH)*

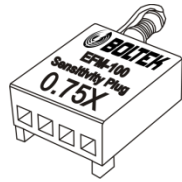
***COAT PIPE THREADS WITH SILICONE GREASE.***

***FAILURE TO PROPERLY TIGHTEN BULKHEAD ONTO MAST WILL RESULT IN WATER DAMAGE  
TO FIELD MILL NOT COVERED BY WARRANTY***

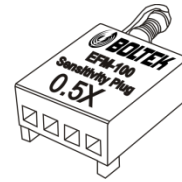


*READY FOR THE FIELD MILL TO BE CONNECTED*

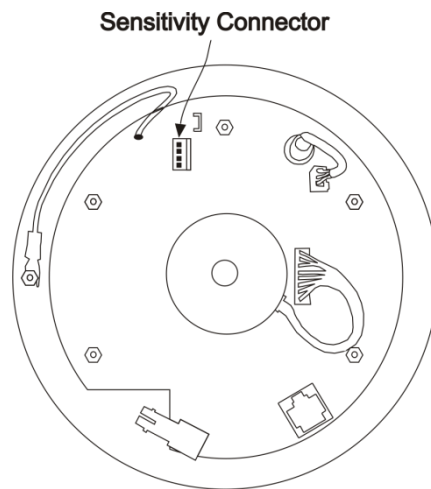
***REFER TO THE EFM-100/200 DOCUMENTATION FOR DETAILS ON CONNECTING AND  
GROUNDING YOUR FIELD MILL***



*EFM-INV2 USE 0.75X*



*EFM-INV3 USE 0.5X*



**INSTALL THE APPROPRIATE SENSITIVITY PLUG BEFORE CONNECTING FIELD MILL**







**COAT BOTH SIDES OF THE RUBBER WASHER WITH SILICONE GREASE**

*Connect Power, Ground and Fiber Optic connectors, then screw the Field Mill to its cover. Lower the Shroud over the Field Mill. Lower the greased rubber washer onto Bulkhead Connector, and then the Bulkhead Nut. Tighten the Bulkhead Nut until the Rubber Washer is visibly compressed.*



**PIPE WRENCH TIGHTENING NUT ONTO RUBBER WASHER  
(NOTE: LEFT-HANDED COUNTER-CLOCKWISE THREAD ON NUT )**

*DO NOT ALLOW FIELD MILL TO ROTATE OR WIRES CONNECTING FIELD MILL WILL TWIST*

***COAT BOTH SIDES OF RUBBER WASHER WITH SILICONE GREASE.***

***FAILURE TO PROPERLY TIGHTEN NUT ONTO RUBBER WASHER AND SHROUD WILL RESULT IN WATER DAMAGE TO FIELD MILL NOT COVERED BY WARRANTY***



*COMPLETED ASSEMBLY (with 2' tripod)*



*COMPLETED ASSEMBLY (with pole mount bracket)*