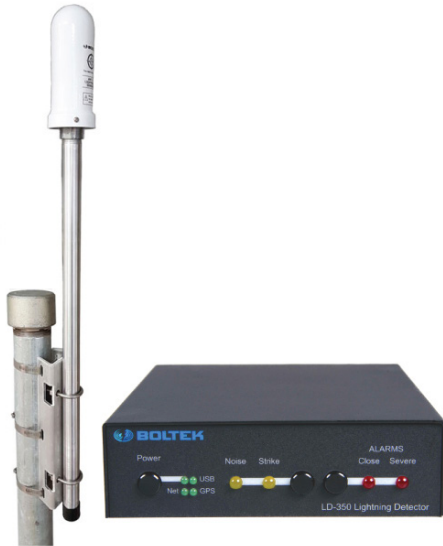


Long Range Systems

LD-350 Lightning Detector



- ✓ Live long range detection up to 300 miles (480km)
- ✓ Track Storm Movement
- ✓ User set alarms for Close Storm or Severe Storm alerts
- ✓ Detailed strike types and polarity
- ✓ Display software is compatible with all current Windows operating systems
- ✓ Optional Output Relay Module (RLO-10)
- ✓ No online or recurring fees
- ✓ One year parts & labor manufacturers warranty

Operation

Boltek's LD-350 puts a live-action lightning display on your computer screen, showing storm activity up to 300 miles in all directions from your location so you can track position, speed and direction of lightning. The LD-350's direction-finding antenna measures lightning strike direction while the LD-350's receiver estimates distance from received signal strength.

Lightning Display

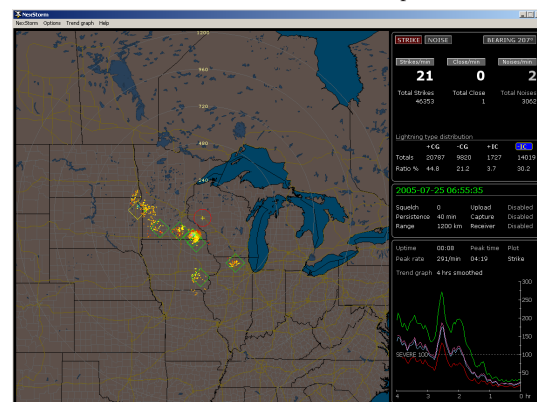
LD-350 data is live! You are actually detecting the lightning strikes themselves. Strike rates, both Close Strikes / Minute and Total Strikes / Minute are shown for the previous hour on the Strike Rate Trend Graph letting you easily see if storms are increasing in severity or dying off. There are no on-line or recurring charges of any kind. Strike polarity (positive and negative) and strike type (cloud to cloud and cloud to ground) are separated and broken down to display count of each type of strike.

A custom vector map will allow you to zoom into the region of interest. Zoom out to the maximum range of 750 miles (1500 miles across) or zoom in as close as 15 miles to see only the nearby storms.

Back view of LD-350 Long Range Detector



NexStorm Lightning Display Software (shown with custom vector map)



LD-350 Lightning Detector

SPECIFICATIONS

Alarms

Close Storm	1 configurable range 6 to 300+ miles (10 to 480+ km)
Severe Storm	1 configurable strike rate 10 to 990 (strikes/min)

LED Indicators

Power (green)	On when power applied
Noise (yellow)	Flashes as noise is detected and processed by receiver
Strike (yellow)	Flashes as strike signals are received and processed by receiver
Close (red)	On when lightning is detected within Close Storm Alarm range
Severe (red)	On when Strikes per minute detected hit or exceed set amount

Software

NexStorm Display (Full Version)	Included with Long Range Kit
Custom Vector Map	Included with Long Range Kit
NexStorm Lite Display	Free - Included with basic sensor package
StormVue NGX Operating System	Optional software for remote display Microsoft Windows 10, 8, 7, Vista, XP, 2000, NT

Communications

Configuration Port	USB
Output Data Port	USB

RLO-10 Optional Relay Outputs

Strike Alert	Solid-state relay 80VDC/57VAC/2A configurable NO/NC
Severe Strike Rate Alert	Solid-state relay 80VDC/57VAC/2A configurable NO/NC
Close Storm Alert	Solid-state relay 80VDC/57VAC/2A configurable NO/NC

Power

Connector	2.1mm/5.5mm coaxial
Voltage	11.5VDC - 14VDC
Power Consumption	4 W
Source	120VAC US plug or 120-240VAC international multi-plug wall adapter

Enclosure

Material	Aluminum
IP Rating	20
Dimensions	5.0" x 6.5" x 1.5" / 127 mm x 165mm x 38mm

Environmental

Operating Temperature	-40 to 60 C / -40 to 140 F
Operating Humidity	0 to 99% non-condensing

Agency Approvals	CE, FCC, cULus, C-tick
Warranty	1 Year

Ordering Information

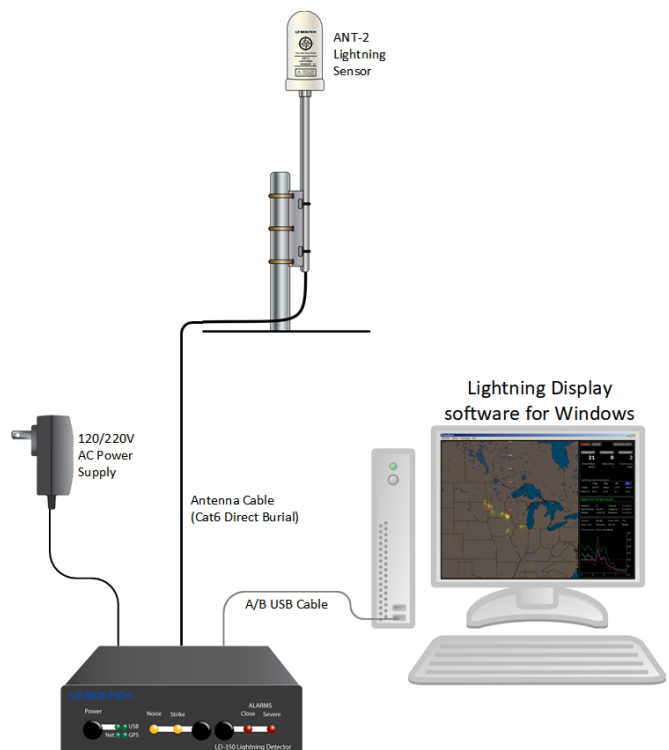
LD-350-KIT-120V-50FT	LD-350 kit for 120VAC
LD-350-KIT-220V-50FT	LD-350 kit for 220VAC

Standard kit includes Cat6 direct burial 50'/15m sensor cables.
 Additional cable lengths available on request.

LD-350 Shown with optional RLO-10



LD-350 CONNECTION DIAGRAM



ADVISORY USE ONLY

This equipment does not include self-test circuitry to warn of loss of functionality. Additional measures should be in place to safeguard personnel or equipment.

