



Alert Systems

SL-180-3 Outdoor LED Stacklight



- ☑ High visibility, even in direct sunlight
- ☑ 360 degree visibility
- ☑ Select steady-on, or from 7 available flash patterns
- ☑ Rugged cast and welded aluminum construction
- ☑ Stainless steel hardware
- ☑ Weatherproof and UV resistant
- ☑ Select from red, yellow, green, white or blue for each level
- ☑ Select steady-on or flash pattern for each level
- ☑ 12V or 24V DC operation
- ☑ Easy installation
- ☑ Available with 1, 2, 3, 4, or 5 stack levels

The Boltek SL-180 series LED stacklights (signal towers) are robustly designed for use outdoors in all weather.

The SL-180's large diameter provides excellent visibility over long distances, making them also ideal for indoor use in a larger facility.

High intensity LED's make them clearly visible, even in direct sunlight.

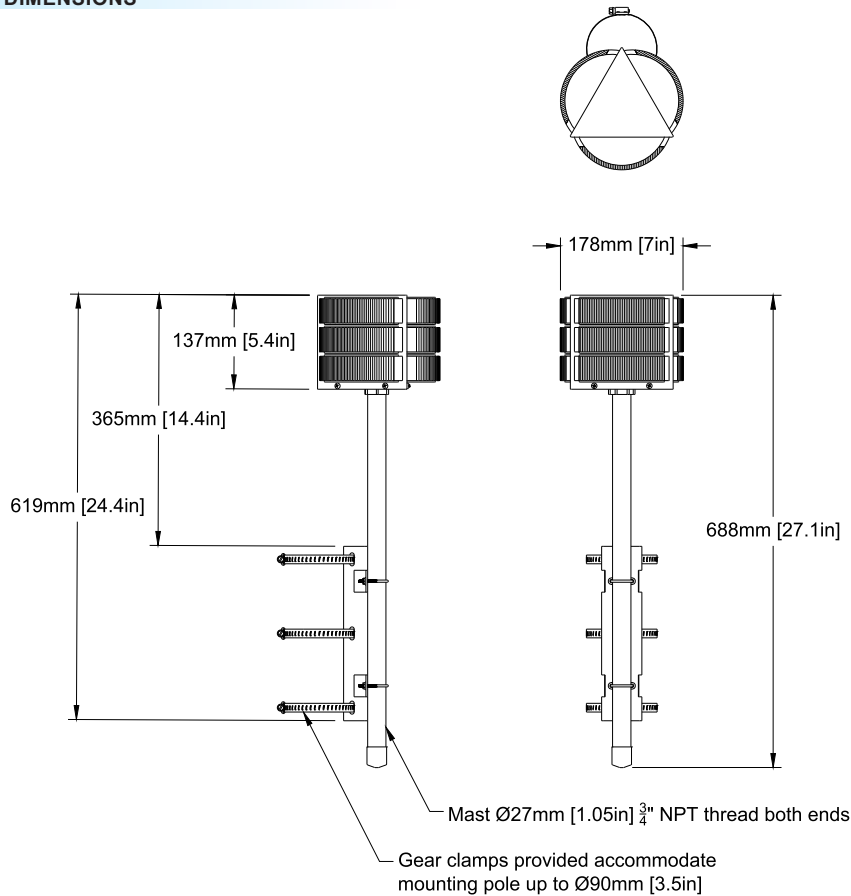
Choice of flash pattern allows annunciating different levels of alert within the same color, for example: red steady-on, red single flash, red double flash.



SL-180 Outdoor Stacklight Product Line

3 Level Outdoor LED Stacklight

DIMENSIONS



Enclosure

Power Requirements	10-30VDC 20W per color
Material	Aluminum
IP Rating	65
Dimensions	3.9" x 4.5" x 1.1" / 100 mm x 114mm x 28mm
Weight	7.0 lbs / 3.2 kgs
Shipping Weight	9.4 lbs / 4.3 kgs
Operating Temperature	-60 to 60 C / -76 to 140 F
Operating Humidity	0 to 100%
Agency Compliance	CE, FCC
Warranty	2 Year

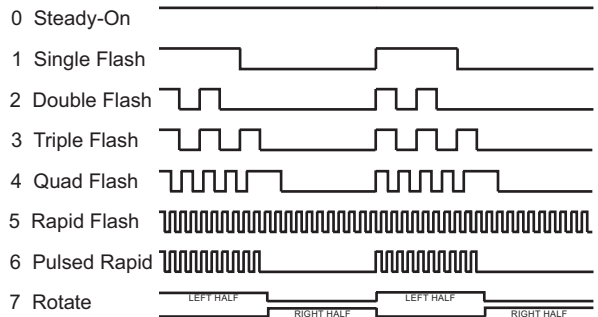
Ordering Information

SL180-3-RYG-410 3 Level Stacklight Red/Yellow/Green

SL180-3- <top color> <middle color> <bottom color>
 - <top flash> <middle flash> <bottom flash>

Color codes:
 R - Red
 Y - Yellow/Amber
 G - Green
 B - Blue
 W - White

Flash Patterns



Specify on order desired flash patterns.

Factory default flash pattern: Green - Steady On (0)
 Yellow - Double Flash (1)
 Red - Quad Flash (4)
 White - Steady On (0)
 Blue - Steady On (0)

Flash pattern can be changed in the field using internal PCB jumpers.