

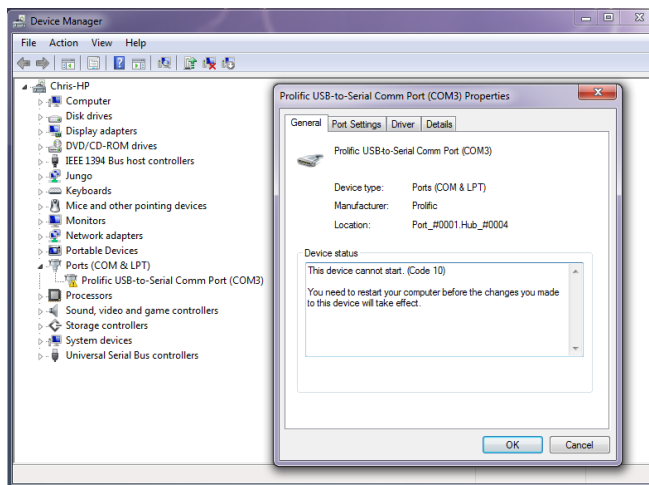
USB-RS232 Windows 7 Driver Fix

The following steps will correct the driver issue (Error Code 10) for the USB-RS232 cable after installing the drivers for Windows 7.

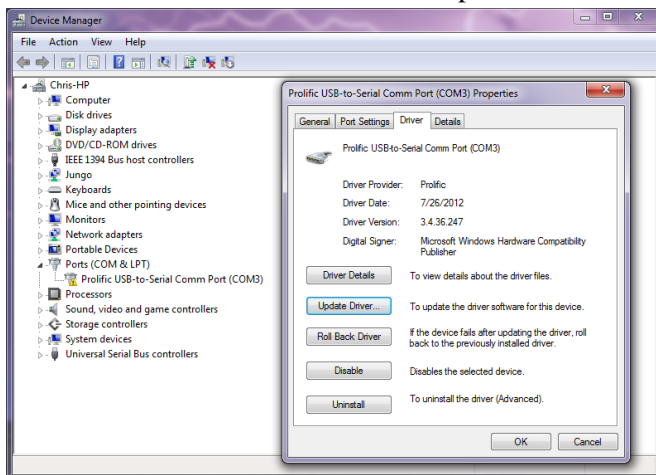
1. Open Windows device Manager:

- Start Menu
- Control Panel
- Hardware and Sound
- Device Manager (under Devices and Printers)

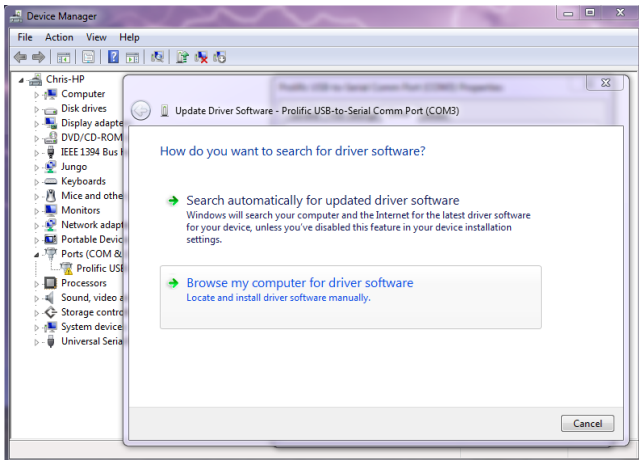
Double click on the device "Prolific USB-to-Serial Comm Port"



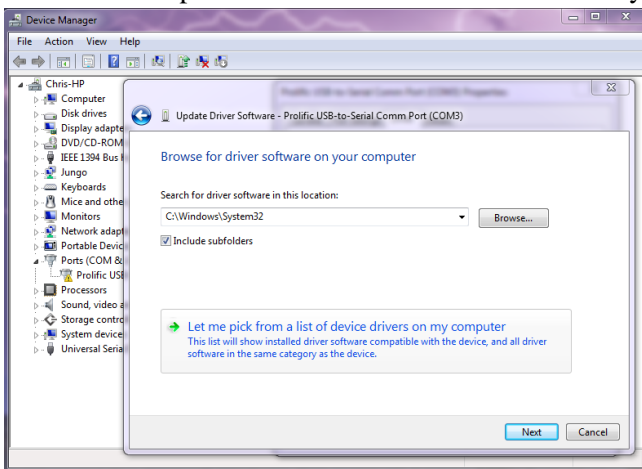
2. Select the "Driver" tab and click on "Update Driver..." button



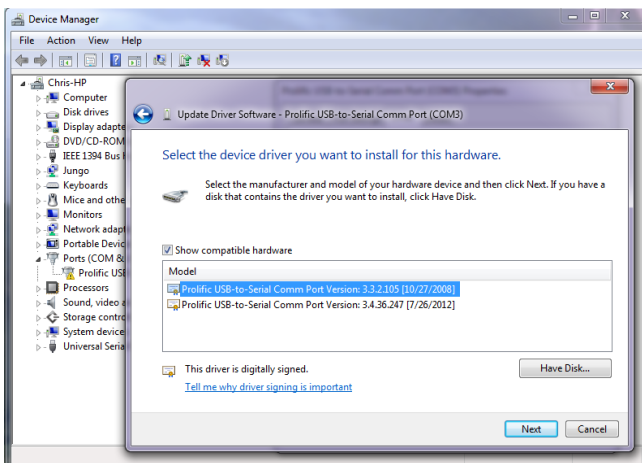
3. Select "Browse my computer for driver software"



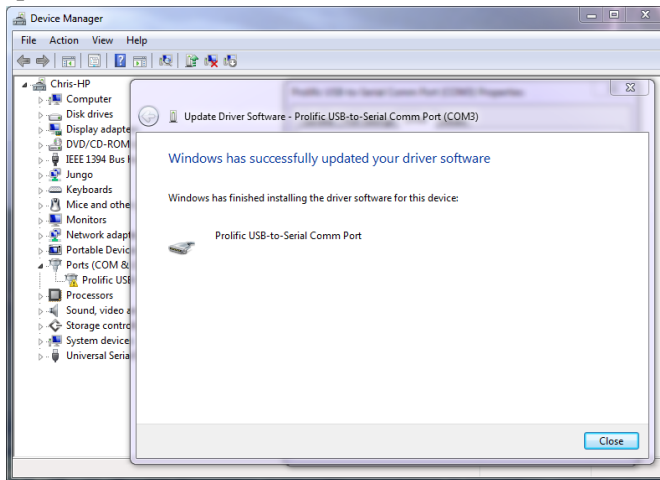
4. Select "Let me pick from a list of device drivers on my computer"



5. Select the older driver (usually dated with year 2008) and click on the "Next" button



6. Wait for the driver to install, and you should see the following screen showing a successful update to the driver software.



7. Close out of all the windows. Windows may ask you to reboot your computer in order for the settings to take in effect.